

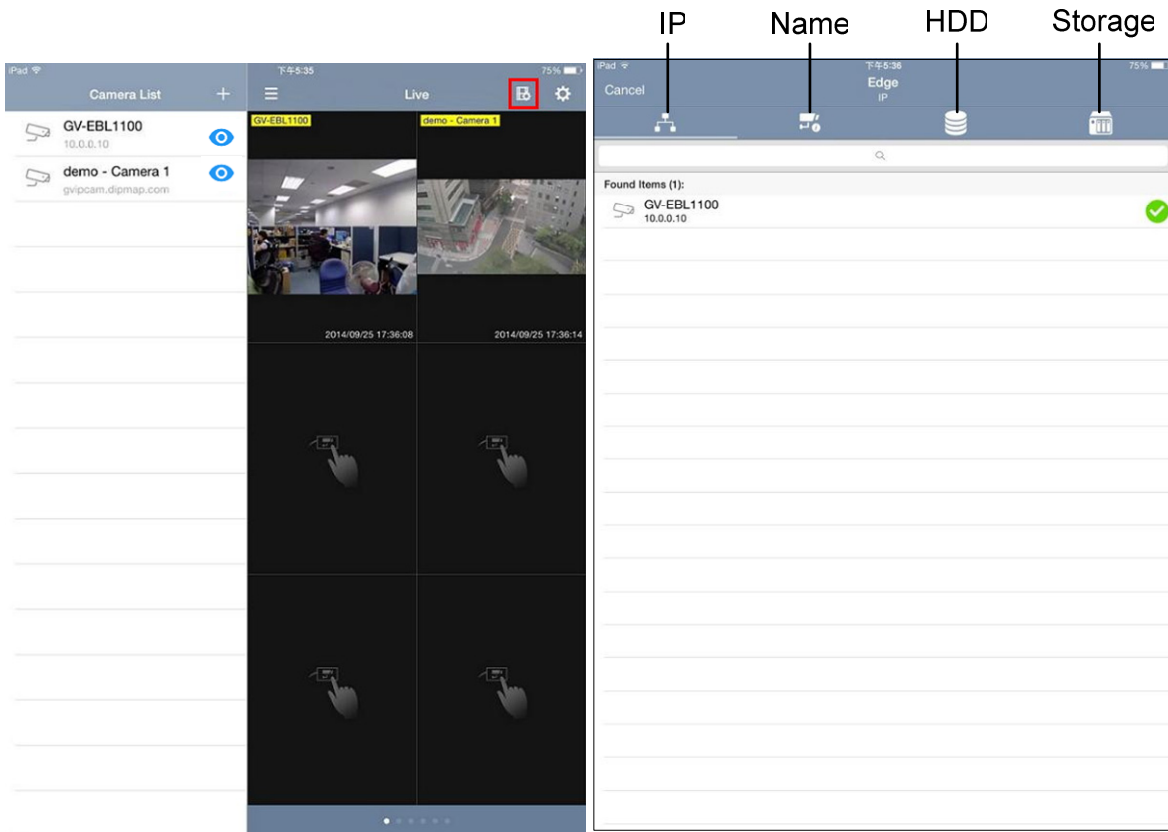




1.8 Edge Settings

The Edge settings section allows you to configure the IP address, device name and storage path for GV-IP devices.


To access the settings, enable **Edge Tool** in the Settings page (see 1.9 System Settings), and the **Edge settings** button  will be added on the main page. Tap  and the Edge settings page appears.



Main Page

Edge Settings Page



Note: For Android devices, click  on the main page and tap **Edge Tool** to access the Edge settings.

LIVE VIEW SETTING

Show Device Name	<input checked="" type="checkbox"/>
Show Device Time	<input checked="" type="checkbox"/>
Keep Image Ratio	<input checked="" type="checkbox"/>
Multi View Buffering	<input checked="" type="checkbox"/>
ARM&Email	<input checked="" type="checkbox"/>
PTZ Speed 3	
Delete All Entries on Camera List	
Backup Camera List	
Edge Tool	

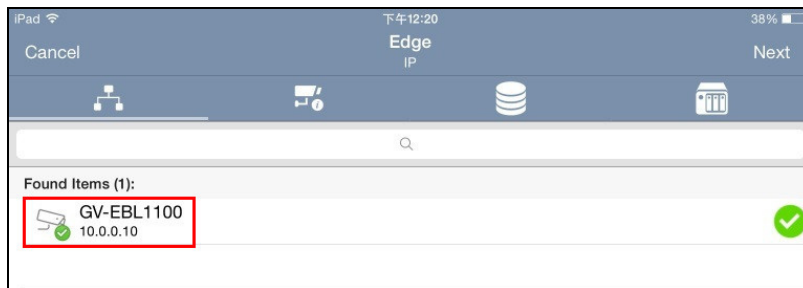


1.8.1 Changing IP Address

To change the IP address of a GV-IP Device, follow the steps below.

Note: The function of changing IP address is only supported by compatible GV-IP Camera, GV-Video Server and GV-Compact DVR.

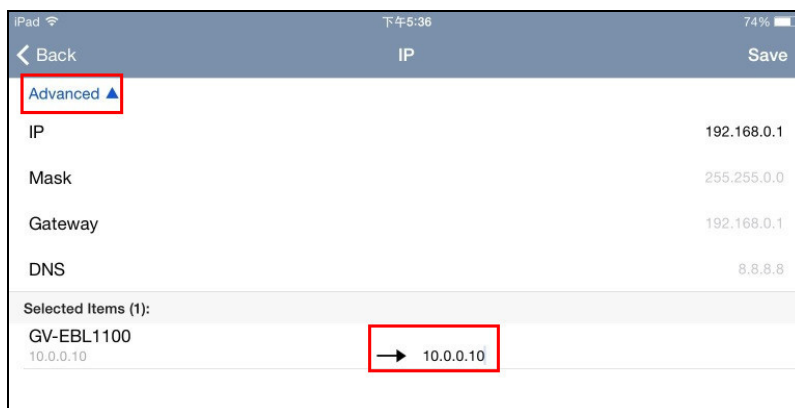
1. On the IP settings page, select the desired GV-IP Device. A green tick appears under camera name.



2. Tap **Next** at the upper-right corner. This page appears.



3. Type a new IP address and optionally tap the **Advanced** button to configure the Mask, Gateway and DNS settings.



4. Tap **Save** to enable the settings.

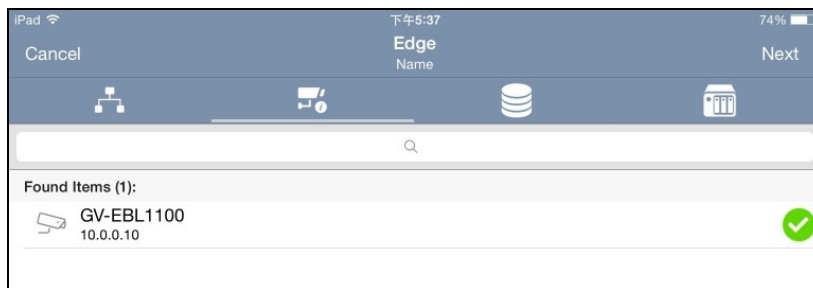


1.8.2 Changing Device Name

To change the device name of a GV-IP Device, follow the steps below.

Note: The function of changing device name is only supported by compatible GV-IP Camera, GV-Video Server and GV-Compact DVR.

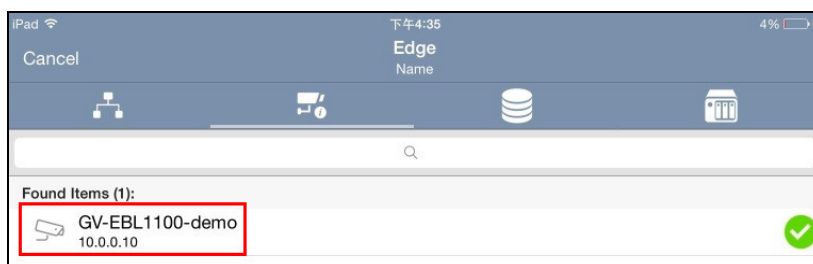
1. On the Edge settings page, tap the **Name** button . The Name settings page appears.



2. Select the desired GV-IP Device and tap **Next**. This page appears.



3. Type a new name for the device and tap **Save**.
4. On the Name settings page, pull to refresh. The device name is updated.






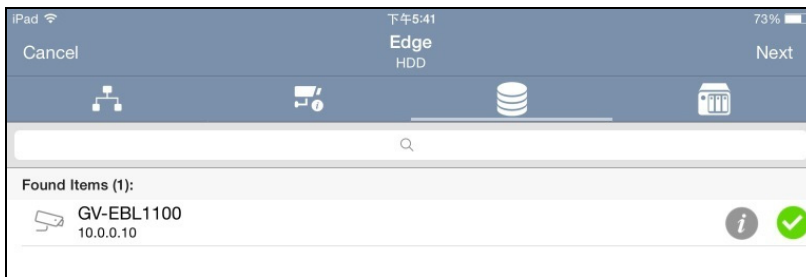
1.8.3 Assigning Storage Path

To assign the recording storage path on GV-NAS System for a GV-IP Camera, follow the steps below.

Note:


1. Make sure the camera stops recording before assigning storage path.
2. This function is only supported by GV-IP Camera firmware V3.0 or later and GV-Target IP Camera firmware V1.02 or later.
3. The Edge recording is only supported by GV-NAS Systems.

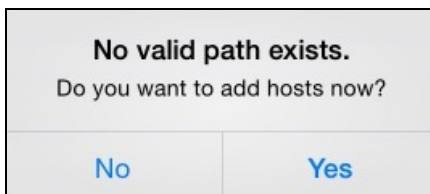
1. On the Edge settings page, tap the **HDD** button . The HDD settings page appears.



2. Select the desired camera and tap **Next**. This page appears.

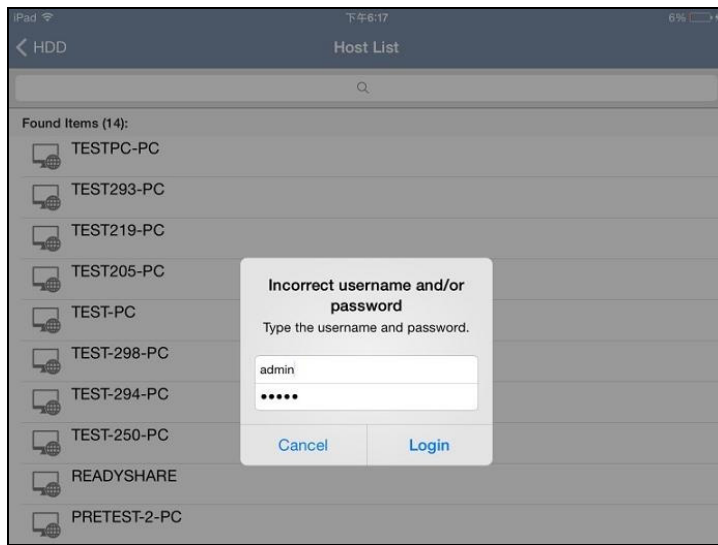


3. Tap the **Edit** button  and select **Yes** in the pop-up dialog box to add a valid path.

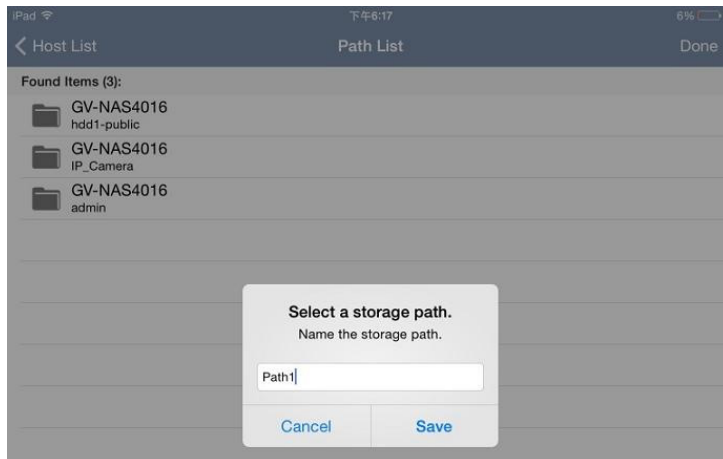





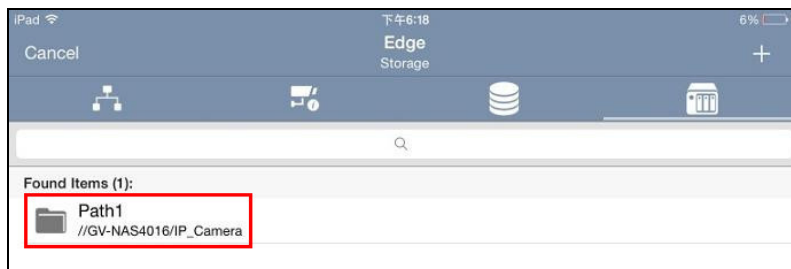
- In the pop-up Host List, select the desired host, type the username and password of the host and tap **Login**.



- In the pop-up Storage Path List, select the desired storage path, type a name and tap **Save**.




- To view the added storage path, on the Edge settings page, tap the **Storage** button . The added path is displayed.





1.8.4 Monitoring HDD Storage

To view the HDD storage status, tap the **Info** button  on the HDD settings page. The HDD Info page appears and displays the capacity.




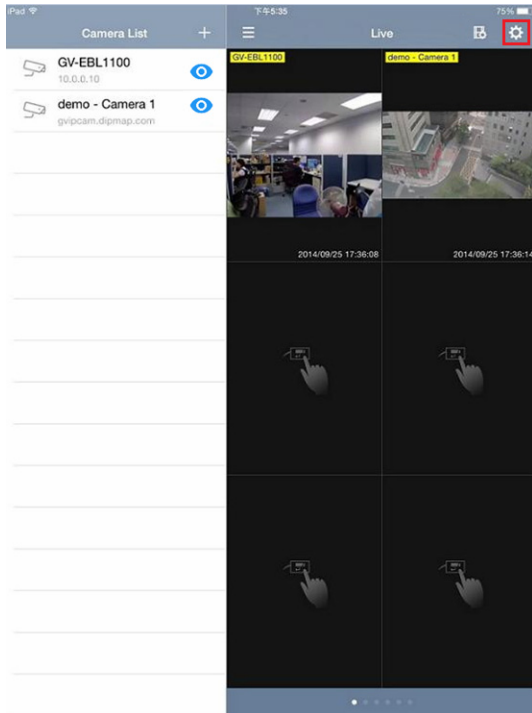
Note:

1. This function is only supported by GV-IP Camera firmware V3.0 or later and GV-Target IP Camera firmware V1.02 or later.
 2. For the camera with its storage path being assigned on the GV-NAS System, the HDD Info page displays the NAS storage capacity; for the camera without storage path assigned, the HDD Info page displays the SD card storage capacity.
-

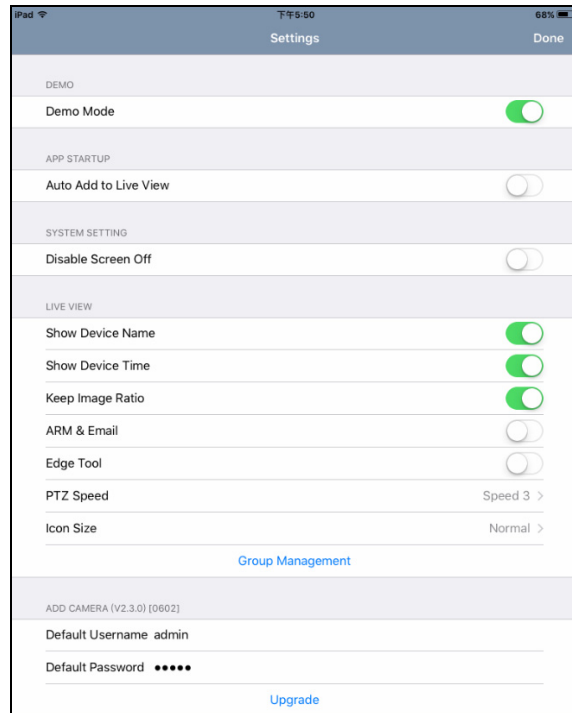


1.9 System Settings

To access GV-Eye settings, click  on the main page. The settings page appears.



Main Page



Settings Page

[DEMO]

- **Demo Mode:** Displays 3 channels of live view for you to experience the features of GV-Eye.

Note: If you enable **Demo Mode**, your current connection of IP-devices and layout settings of live view will be temporarily closed. Instead, 3 demo channels and default layout will be displayed. To resume your previous settings, disable **Demo Mode**.

[APP STARTUP]

- **Auto Add to Live View:** Automatically displays the added IP devices to live view. This function is disabled by default.

[SYSTEM SETTING]

- **Disable Screen Off:** Turns off sleep mode of the mobile device when the GV-Eye is running. This function is disabled by default.



[LIVE VIEW]


- **Show Device Name:** Displays device name on live view.
- **Show Device Time:** Displays device time on live view.
- **Keep Image Ratio:** Displays the live view in proportion to the device's resolution.
- **Multi View Buffering:** Enhances the smoothness of live view with multiple divisions. This function is for Android devices only.
- **ARM & EMAIL:** Displays the alarm invocation and e-mail notification icons on live view.
- **Edge Tool:** Displays the edge settings icon on live view.
- **PTZ Speed:** Changes the PTZ speed. Speed 1 is the slowest and speed 5 the fastest.
- **Icon Size:** Only for iOS devices, changes the size of the icon.
- **Group Management:** Creates groups and arranges live view layouts. GV-Eye can receive up to 96 channels of live view from various GV-IP devices. Users can create up to 8 groups, and each group has 6 pages in total with each displaying up to 16 channels of live view. See *1.5.3 Group Management* for details.

[ADD DEVICE]

- **Default Username:** Sets the default username when adding a new IP device to the Camera List. The default is **admin**.
- **Default Password:** Sets the default password when adding a new IP device to the Camera List. The default is **admin**.
- **Delete All Entries on Camera List:** Click to delete all the entries from the Camera List of all groups.
- **Upgrade:** Click to purchase the tool for fisheye dewarping and see *1.10 Fisheye Dewarping*.



1.10 Fisheye Dewarping

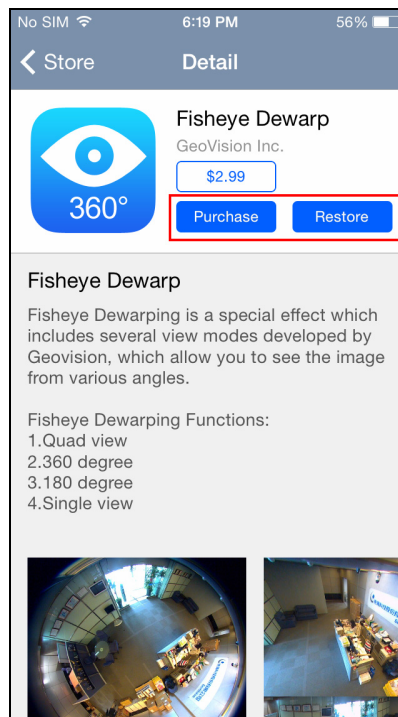
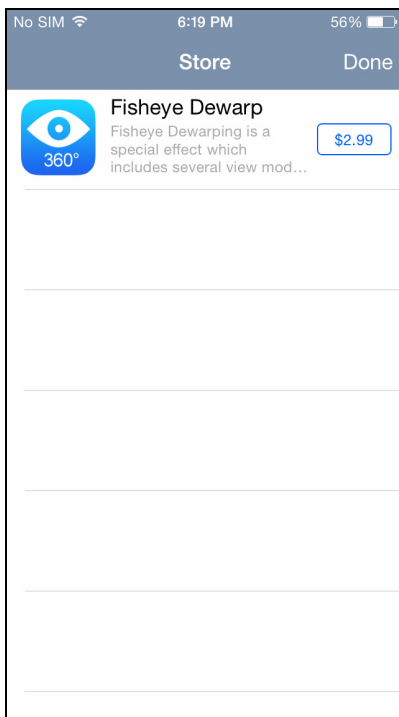
To purchase the Fisheye Dewarping functions, click  on the main page and tap **Upgrade** (see figure on page 15).

Note:

1. Fisheye Dewarping is not applicable for GV-Mobile Server hosts.
 2. Once you have purchased the function, you can also use it on another device set with the same Google account.
-

For iOS Devices

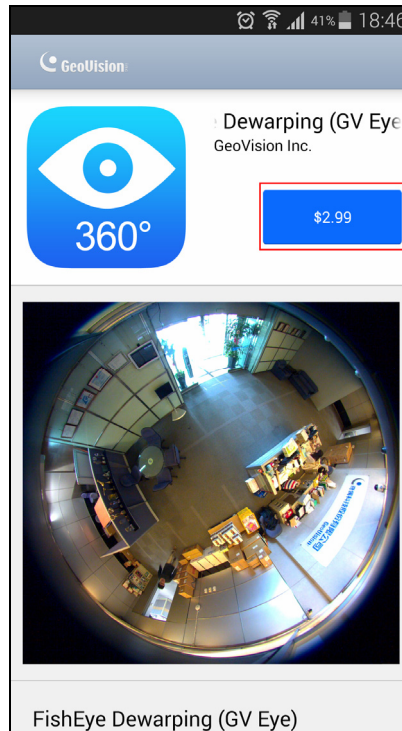
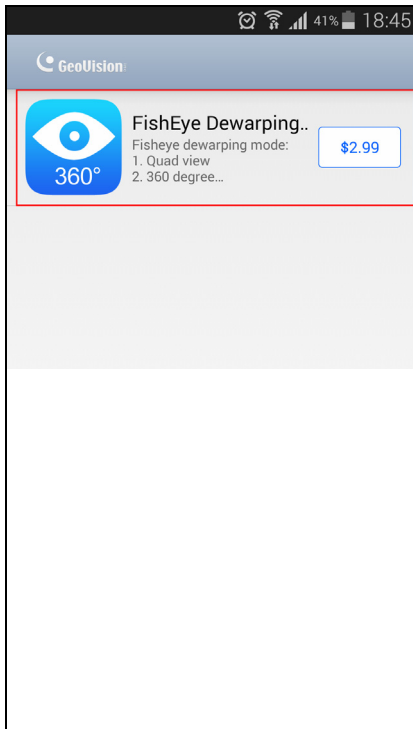
Tap **Purchase** to buy the function for the first time. Tap **Restore** when you've already purchased the function and would like install it on another device.





For Android Devices

Tap the cost button to purchase the function.






1.11 Defining the User Privilege of GV-VMS for GV-Eye

You can alter the setting of user privileges to determine which user account can access Video, Audio, PTZ, Monitor Start/Stop and I/O Output Control from mobile app GV-Eye.

Note: The function is only supported by GV-VMS V16.10.3 or later.

To set up the user privilege:

1. Click **Home** , click the account ID, click **Password Setup**, and select **Local Account Edit** and select the **Web/Mobile** tab.
2. Select or deselect **Video**, **Audio**, **PTZ**, **Monitor Start/Stop** and **I/O Output Control** of specific cameras to allow or deny the user the function.

For instance, firstly, on the Local Account Edit dialog box of GV-VMS, you can deny User1 the access of PTZ. Then, when you log on GV-Eye with the ID and password of User1, you will see that User1 cannot access PTZ on GV-Eye.

